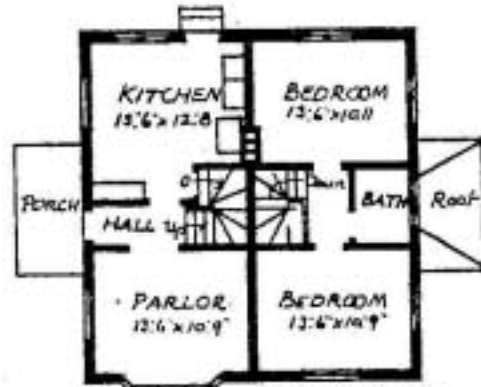
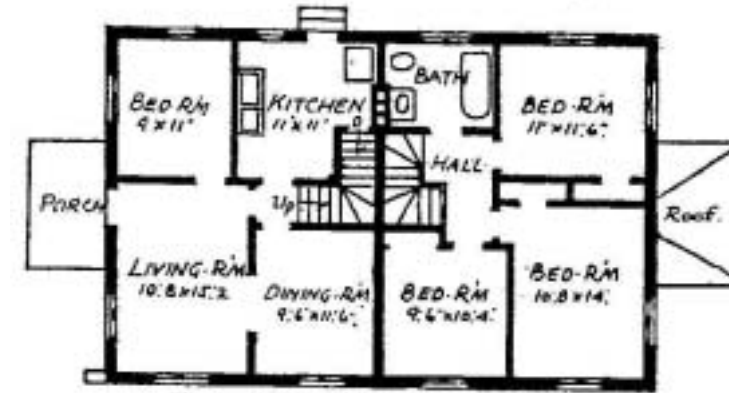


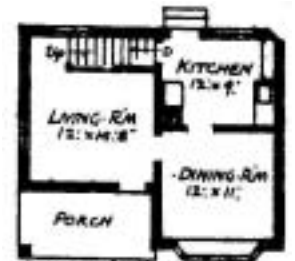
FIRST FLOOR & SECOND FLOOR  
Plans of Double Six-Room House



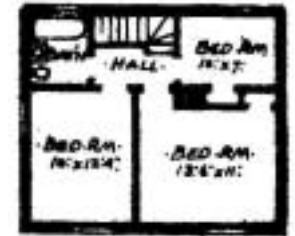
FIRST FLOOR - SECOND FLOOR  
Plans of Double Four-Room House



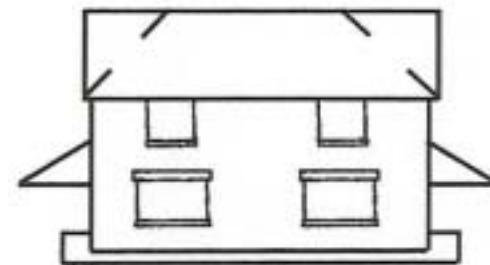
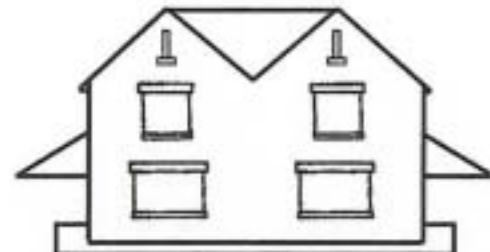
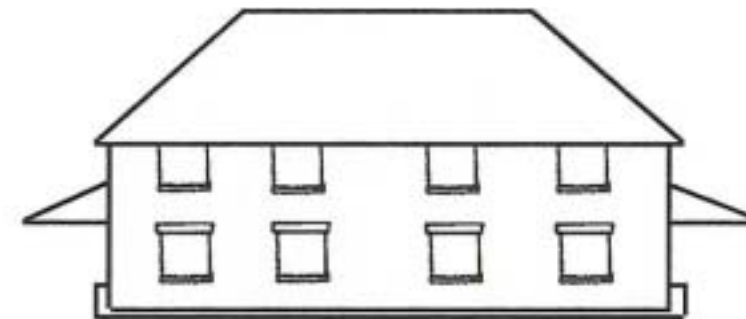
FIRST FLOOR & SECOND FLOOR  
Plans of Double Seven-Room House



FIRST FLOOR  
Single Six-Room Cottage



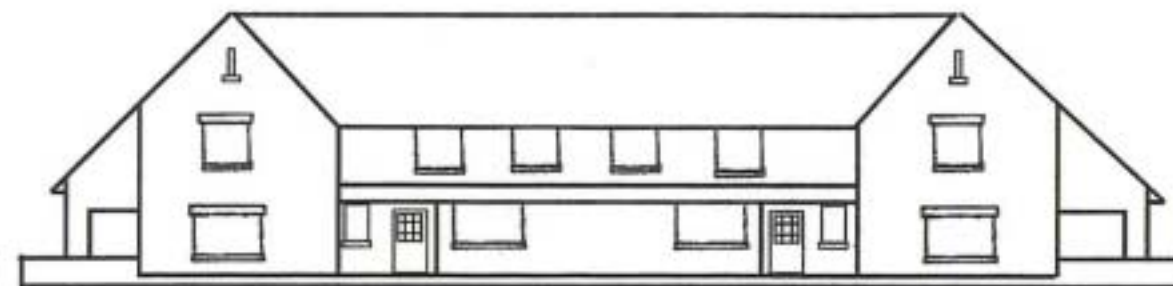
SECOND FLOOR  
Single Six-Room Cottage



The initial phase of construction for the Mark Town Site was begun in 1917. The plat was not filed until Mark Mfg. and the housing were sold to Youngstown Sheet & Tube Company in 1923. The initial building phase was restricted to five floor plans with a total of 11 exterior elevations, all being low cost worker houses or cottages as they were referred to at that time.

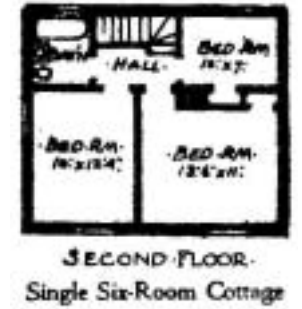
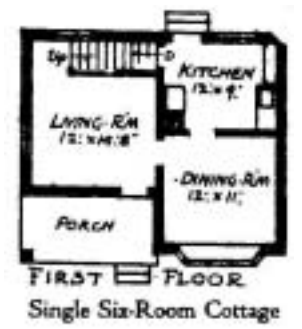
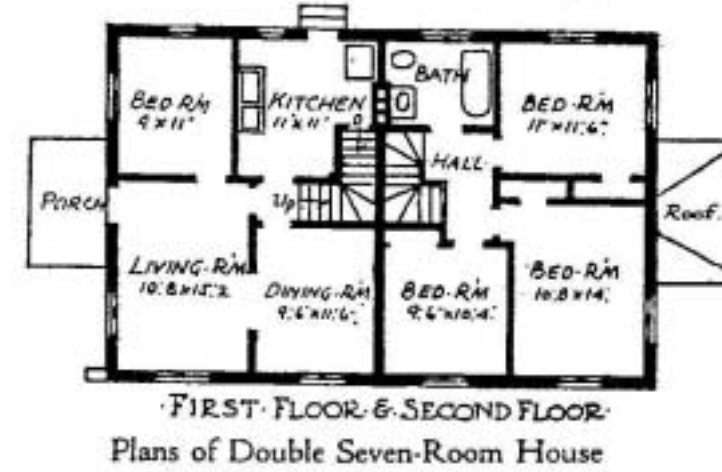
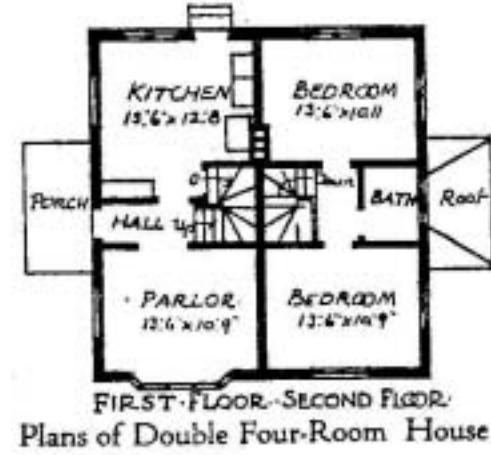


FIRST FLOOR & SECOND FLOOR PLANS  
Plans of Quadruple Four and Five-Room Houses

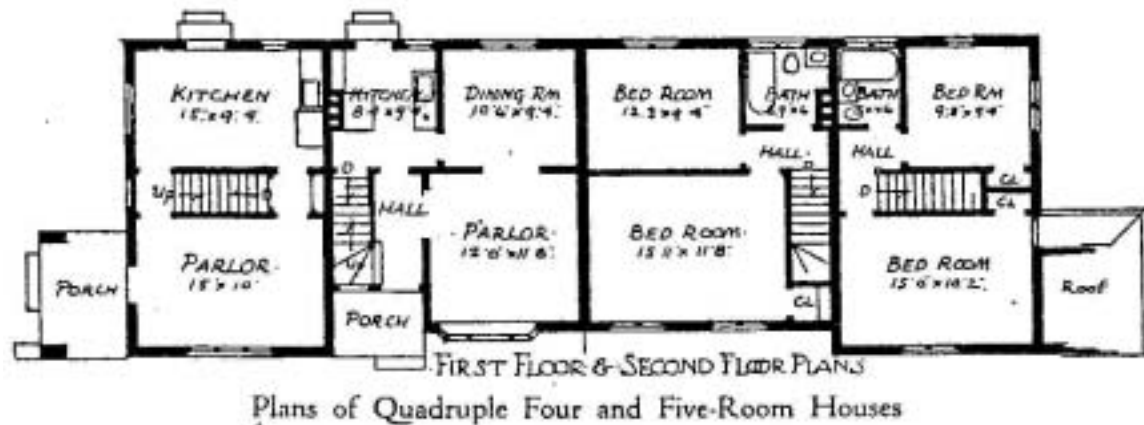


Plans courtesy of the Marktown Preservation Society.





The initial phase of construction for the Mark Town Site was begun in 1917. The plat was not filed until Mark Mfg. and the housing were sold to Youngstown Sheet & Tube Company in 1923. The initial building phase was restricted to five floor plans with a total of 11 exterior elevations, all being low cost worker houses or cottages as they were referred to at that time.



Plans courtesy of the Marktown Preservation Society.